

USER MANUAL



Software developed by Holstein Association USA, Inc.



1) Introduction

Minimum installation requirements
Installation Instructions
Getting Started

2) Looking up an Individual Bull

3) Selecting a Group of Bulls

4) View a Report for Selected Bulls

5) Evaluate Performance for Selected Bulls

6) Input Data

7) Define Index

8) Mating Advisor

9) Examples

10) MultiMate

Introduction

Red Book Plus MultiMate was designed with a new user-friendly interface. It has several new, exciting features and also additional bulls and the ability to add young sires.

If you have questions on Red Book Plus MultiMate, Call Holstein Association USA customer service at 800-952-5200.

Minimum installation requirements:

- 90 MB free disk space,
- 128 MB RAM, 800 MHz processor
- Windows 98 or higher operating system
- 1024 x 768 minimum screen display

Installation Instructions

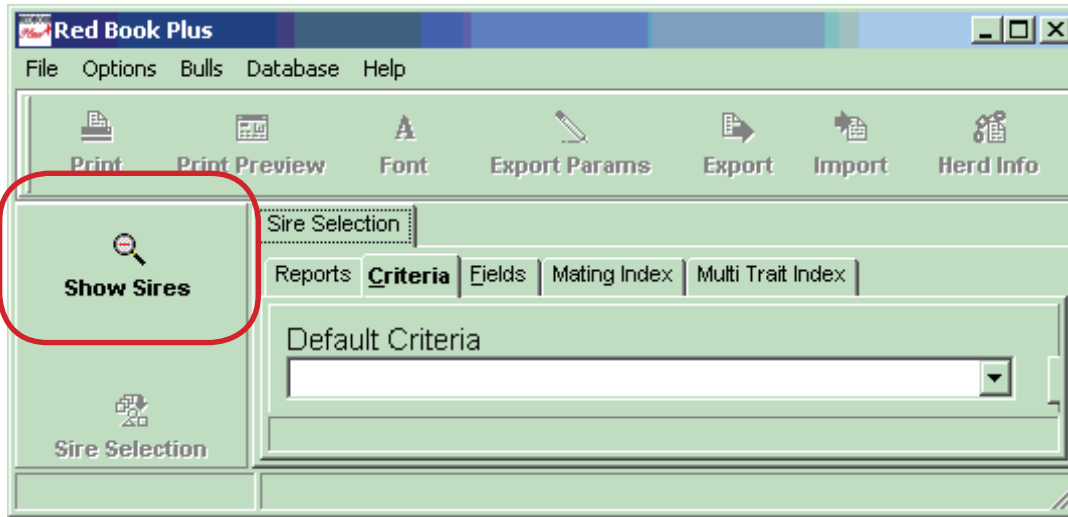
Insert the CD into the computers CD drive to install, and follow the instructions that will appear on the screen. When you finished installing the program make sure to restart the computer before running the Red Book Plus MultiMate program.

Getting Started

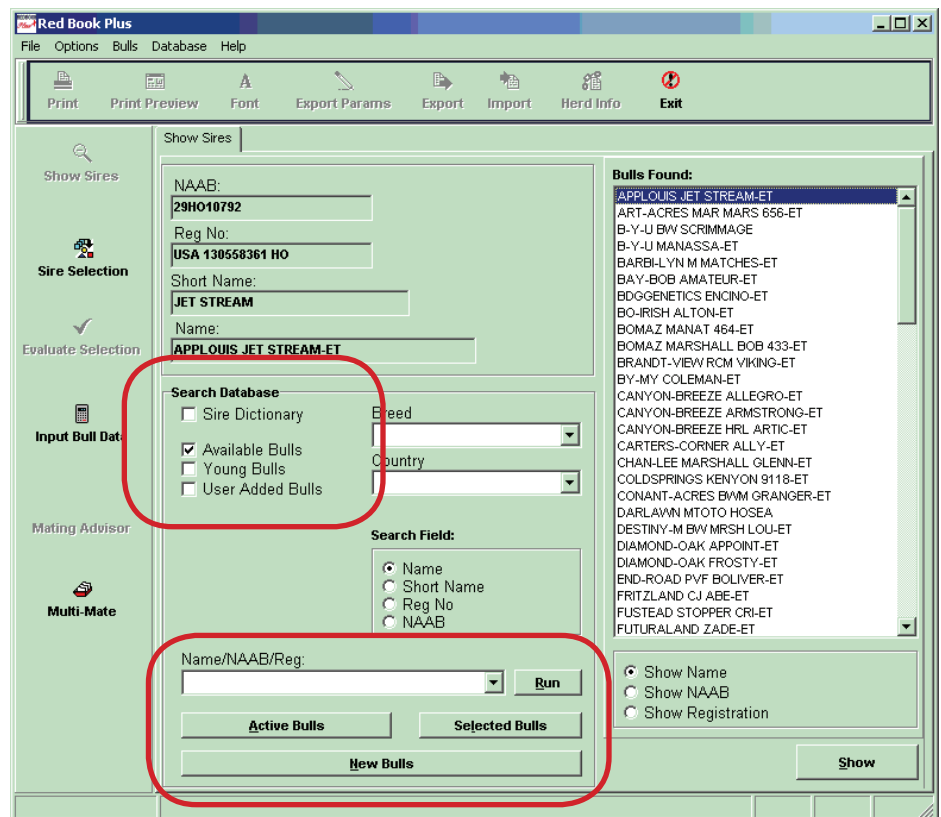
To start the program, either double-click on the Red Book Plus MultiMate shortcut icon on the desktop, or go to the Start menu, choose Programs, then Red Book Plus MultiMate. Depending on the speed of your computer, the introduction screen will show until the program is completely loaded.

Looking up an Individual Bull

Click on the **Show Bulls button** on the left hand side of the screen. The Individual Bull Lookup Screen will appear. This screen is also the first screen to appear when the program opens.

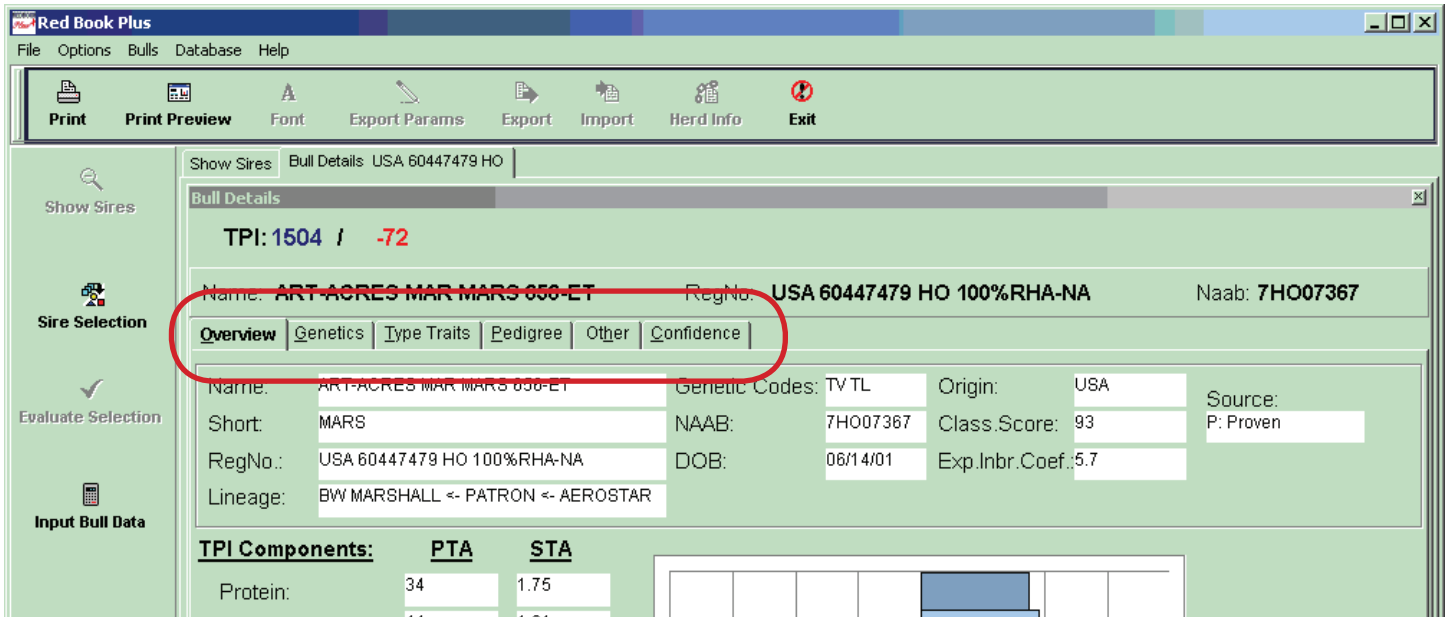


In the **Search Database box**, first select Available Bulls (for all active sires), Sire Dictionary (for a complete listing of sires included with the program), Young Bulls (for a listing of young bulls added using the young bull option), or User Added Bulls (for a listing of all bulls added by the user from a different source) by checking the correct box. To narrow down the search, choose the breed and country, otherwise enter the name, NAAB code or registration number of the bull you wish to find and click on Run. To display a predefined list of bulls, click on Active Bulls or Selected Bulls, which is the last group of bulls that was selected (program defaults to Top 100 TPI after installation) or New Bulls (bulls with their first production and/or type proof).

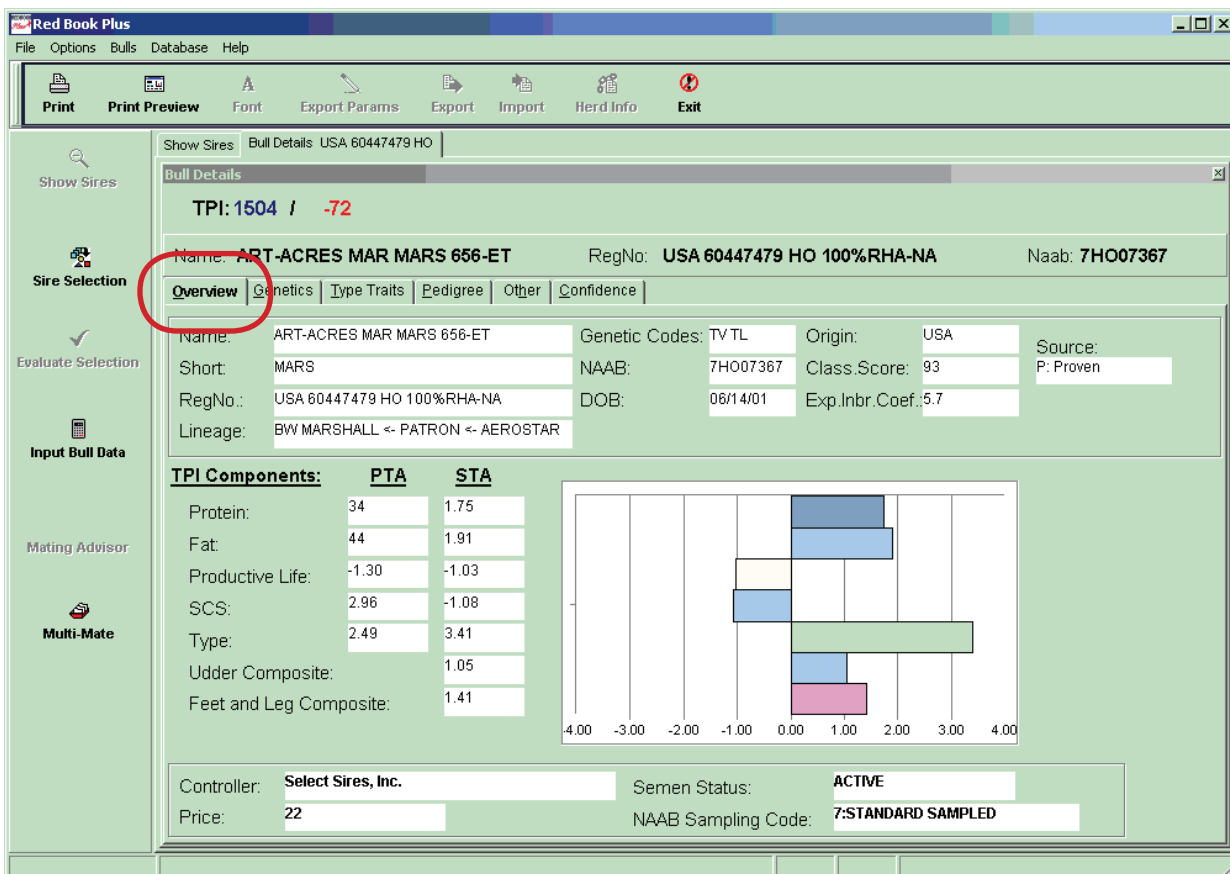


In the **Bulls Found box**, choose to view the bulls by name, NAAB code or registration number. Then, click on the bull you are looking for in the Bulls Found list and click on the Show button or Double-click the sire's name. A new Bull Details window will open with the details of the selected sire. You can open up to three Bull Details windows in order to compare bulls easily.

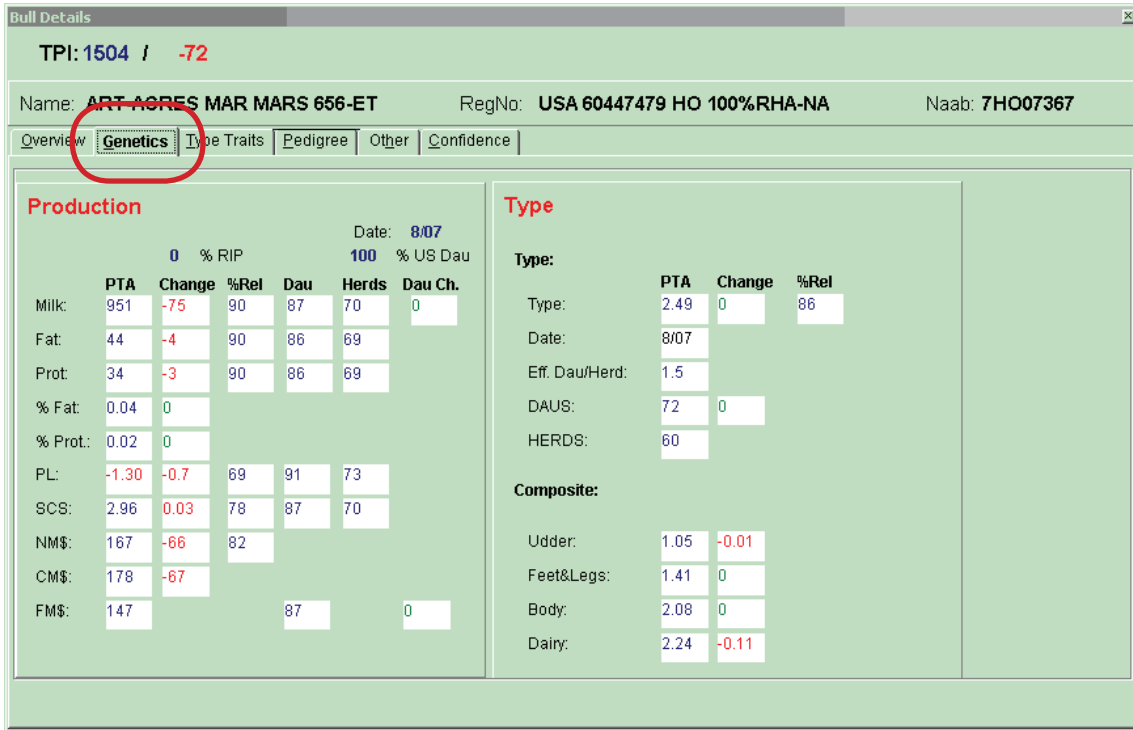
When you are viewing the bull details, below the Registration and NAAB code, click on any of the **Bull Details tabs** to view the sires Overview, Genetics, Type Traits, Pedigree, Other and Confidence screens.



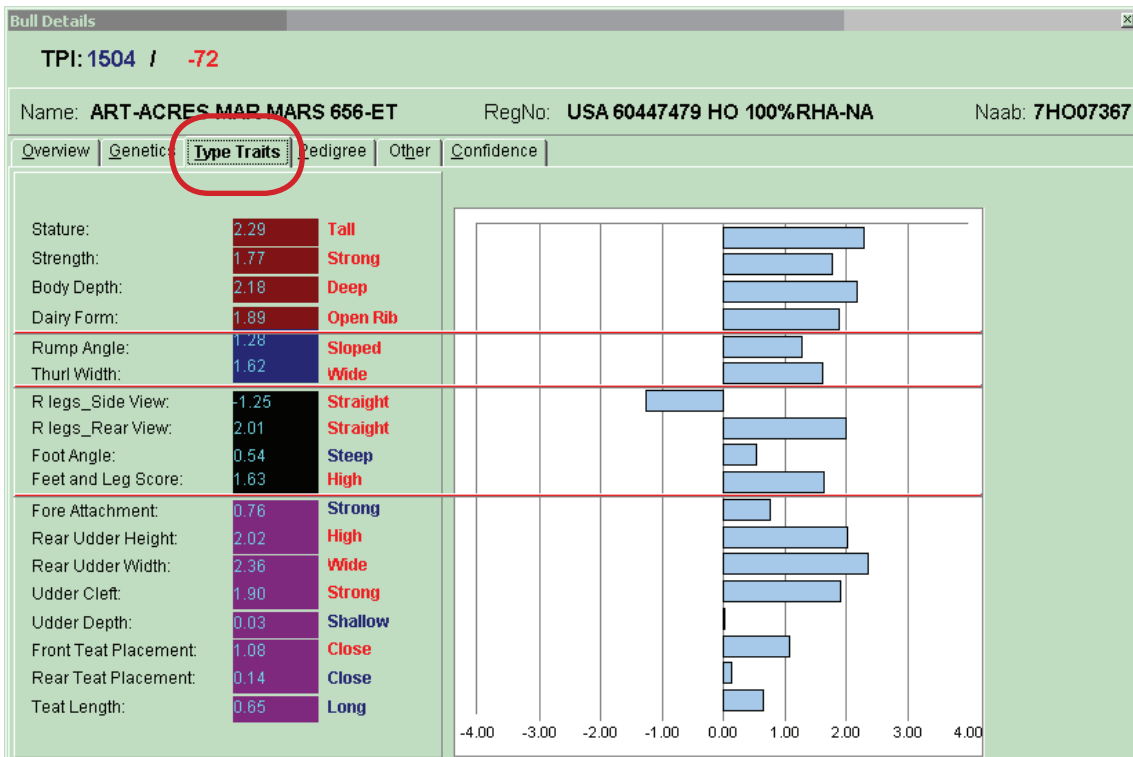
In the **Overview section**, the sires TPI components are assessed.



The **Genetics** section focuses on the Production and Type PTAs. Value changes displayed in Red means a negative change, green means a positive change, and blue means no change.



The **Type Traits** tab provides the Standard Transmitting Abilities with the extreme trait assessments highlighted in red.



The **Pedigree tab** provides the most up to date information available for the sire. Click on the turquoise boxes to view additional production and type information for that animal in the bull's pedigree.

Bull Details
 TPI: 1504 / -72
 Name: ART-ACRES MAR MARS 656 ET RegNo: USA 60447479 HO 100%RHA-NA Naab: 7HO07367
 Overview | Genetics | Type Traits | **Pedigree** | Other | Confidence

Sire: ART-ACRES MAR MARS 656 ET
 % Inbred: 3.3
 Dau. % Inbred: 4.7
 Exp. % Inbred: 5.7
 BW MARSHALL 7HO05375 TPI: 1594M
 MARA-THON BW MARSHALL-ET TV TL

Sire: USA 2290977 100%RHA-NA

ART-ACRES KAY PATRON-ET CTP1 1276
 Dam: USA 17214208 100%RHA-NA

ALTABELLWOOD
 USA 2103297 100%RHA-NA
 USA 14840387 %RHA-

PATRON
 9HO01729
 USA 2160458 100%RHA-NA
 ART-ACRES AEROSTAR KAY K-ET
 USA 14899290 100%RHA-NA

MELWOOD
 USA 1879149 100%RHA-NA
 %RHA-

ELTON
 USA 1912270 100%RHA-NA
 %RHA-

BLACKSTAR
 USA 1929410 100%RHA-NA
 %RHA-

AEROSTAR
 CAN 383622 100%RHA-NA
 ART-ACRES NED BOY KAY K
 USA 12925407 100%RHA-NA

The **Other tab** provides the daughter data, aAa and DMS values, and Calving Ease. The Custom MultiTrait Index and User Defined Data can provide assessment of the bull based on your own customized calculations and entered data.

Bull Details
 TPI: 1504 / -72
 Name: ART-ACRES MAR MARS 656 ET RegNo: USA 60447479 HO 100%RHA-NA Naab: 7HO07367
 Overview | Genetics | Type Traits | Pedigree | **Other** | Confidence

Average:
 Daughter: Milk 26312, Fat 985, Protein 800
 Group: 25417, 939, 765
 Average: Final Sc. 76.2, Age Adj Sc. 79.7, STD Final Sc. 3.9
 Daughter: 76.2, 79.7, 3.9

Custom Multi Trait Index
 User Multi Trait Index
 1:
 2:
 3:
 4:
 User Mating Index:

Conception Rate
 Rate: -3
 Reliability: 94

Reproduction:
 Calv Ease 8, Reliability 90, Dau. CE 8, Reliability 62
 Sire SB 8.5, Reliability 63, Dau. SB 11.2, Reliability 49
 Daughter: Preg. Rate -1.5, Reliability 65, # Daus. 85, # Herds 68

aAa: 423165 DMS: 126,123

Note: User defined Data is NOT provided by the Holstein Association USA, Inc.

The **Confidence** tab gives the PTA reliability and confidence range for the various traits.

Bull Details

TPI: 1504 / -72

Name: ART-ACRES MAR MARS 656-ET RegNo: USA 60447479 HO 100%RHA-NA Naab: 7HO07367

Overview | Genetics | Type Traits | Pedigree | Other | **Confidence**

PTA:

	DAU	HERD	REL	CR	Expected Index Range		
Milk	87	70	90	177	774	< █████ 951 █████ >	1128
Fat	87	70	90	7	37	< █████ 44 █████ >	51
Protein	86	69	90	6	28	< █████ 34 █████ >	40
Net Merit\$	87	70	82				
Prod Life	91	73	69				
SCS	87	70	78				
Type(FS)	72	60	86	0.27	2.22	< █████ 2.49 █████ >	2.76
Linear	72	60	85	0.39			

Effective Dau/Herd Type: 1.5

Selecting a Group of Bulls

Red Book Plus allows you to select a group of bulls based on your own criteria or established lists. Click on the **Sire Selection** button and the Criteria window will open if there has been no previous search or the last bull list if a previous search exists.



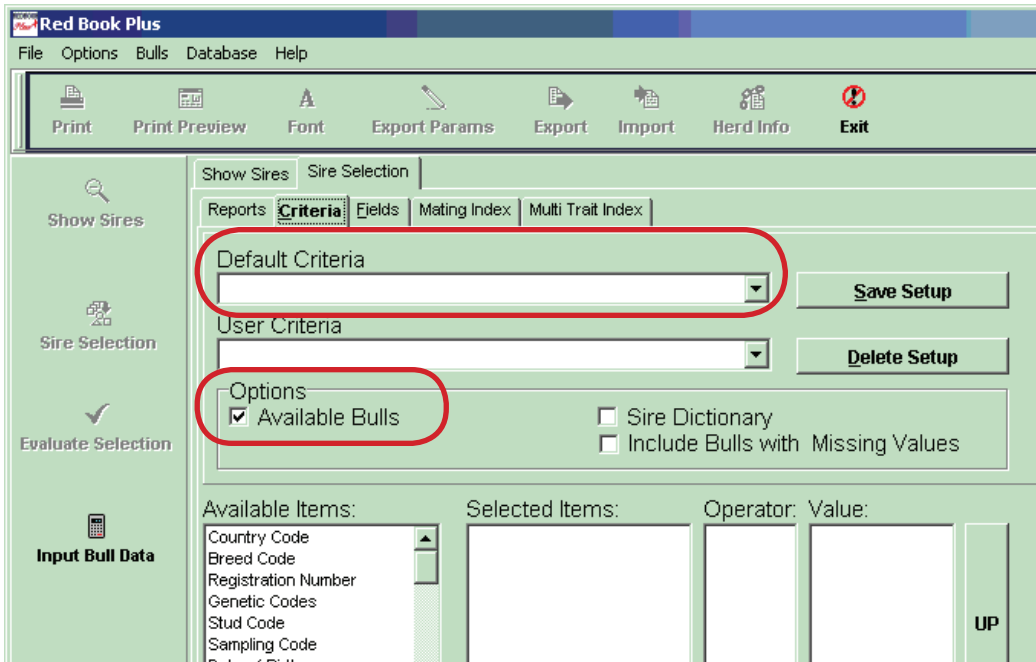
Click on the **Criteria** button and the Sire Selection Criteria screen appears.

A screenshot of the Red Book Plus software interface showing the Sire Selection Criteria screen. The window title is 'Red Book Plus'. The menu bar includes 'File', 'Options', 'Bulls', 'Database', and 'Help'. Below the menu bar is a toolbar with icons for 'Print', 'Print Preview', 'Font', 'Export Params', 'Export', 'Import', 'Herd Info', and 'Exit'. The main area is divided into several sections:

- Left Panel:** Contains buttons for 'Show Sires', 'Sire Selection', 'Evaluate Selection', 'Input Bull Data', 'Mating Advisor', and 'Multi-Mate'.
- Top Panel:** Contains buttons for 'Show Sires', 'Sire Selection', 'Reports', 'Criteria', 'Fields', 'Mating Index', and 'Multi Trait Index'. The 'Criteria' button is circled in red.
- Second Panel:** Contains buttons for 'Manual', 'Save Bulls', 'Load Bulls', and 'Highlight'.
- Table:** A table with 15 columns and 14 rows of bull data. The columns are: Short name, Code#, PTAM, R%Y, PTAF, PTAF%, PTAP, PTAP%, NM\$, PTAT, R%T, UDC, FLC, TPI, and S. Short name.

Short name	Code#	PTAM	R%Y	PTAF	PTAF%	PTAP	PTAP%	NM\$	PTAT	R%T	UDC	FLC	TPI	S. Short name
PHARISEE	1HO06654	1325	94	63	0.05	40	0	512	0.7	83	0.53	-1.55	1662	AMEL
MURPHY	1HO06671	1603	99	55	-0.01	48	0	482	0.94	92	0.6	1.78	1703	MANFRED
TRES	1HO06833	1289	93	64	0.06	27	-0.04	516	1.28	88	0.91	0.83	1693	MTOTO
EVERETT	1HO06943	1106	87	45	0.02	36	0.01	329	2.09	83	1.95	0.89	1646	EMERSON
SATIRE	1HO06959	1722	89	75	0.05	60	0.03	432	0.87	85	1.36	0.9	1669	ADDISON
SHARKY	1HO07127	2008	90	60	-0.05	63	0.01	434	1.27	86	1.45	1.37	1734	BRETT
ENCINO	1HO07154	1678	89	52	-0.03	50	0	417	2.32	85	1.29	2.73	1766	BW MARSHALL
TOYSTORY	1HO07235	1356	93	58	0.03	41	0	424	3.09	89	2.56	0.99	1825	BW MARSHALL
BOONE	7HO05484	1427	99	66	0.05	51	0.03	475	0.87	98	-0.03	-0.07	1663	ALTABELLWOOL
AMATEUR	7HO06168	809	99	23	-0.03	43	0.07	414	1.46	98	0.77	1.93	1687	RUBYTOM
O MAN	7HO06417	1036	99	81	0.16	59	0.11	778	0.96	99	0.35	1.15	2044	MANFRED

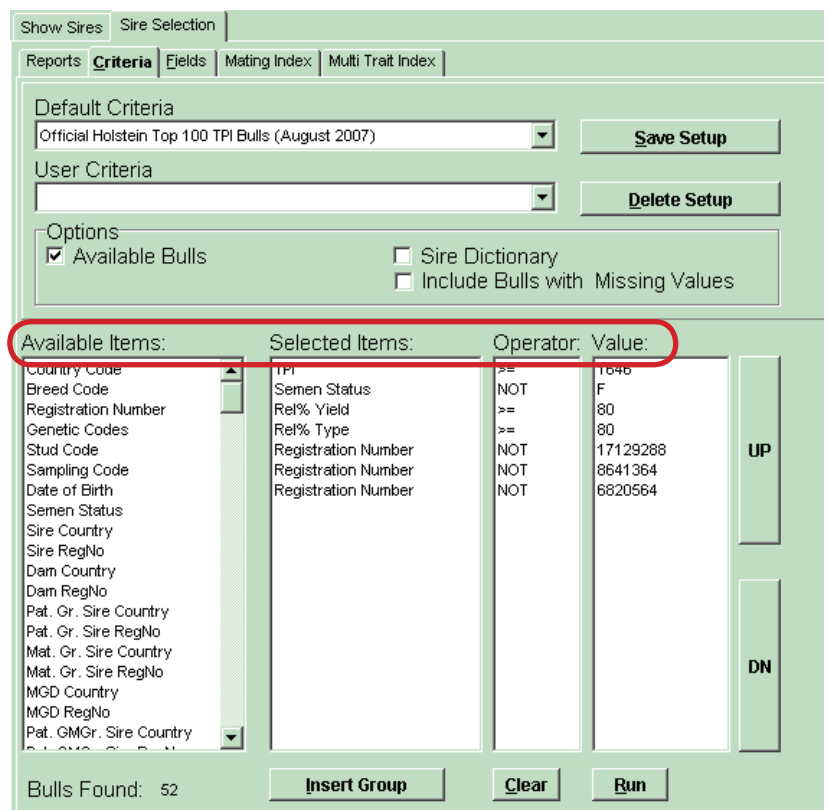
The Default Criteria drop-down menu allows selection of predefined criteria provided by the Holstein Association. User Criteria allows the user to select previously developed customized criteria. Under **Options**, chose the group of bulls you wish to select from, either Available Bulls (active bulls only) or Sire Dictionary (complete list of bulls), by checking the appropriate box.



To develop your own criteria, choose a trait in **Available Items** by double-clicking on it. The selected trait will move to the Selected Items list.

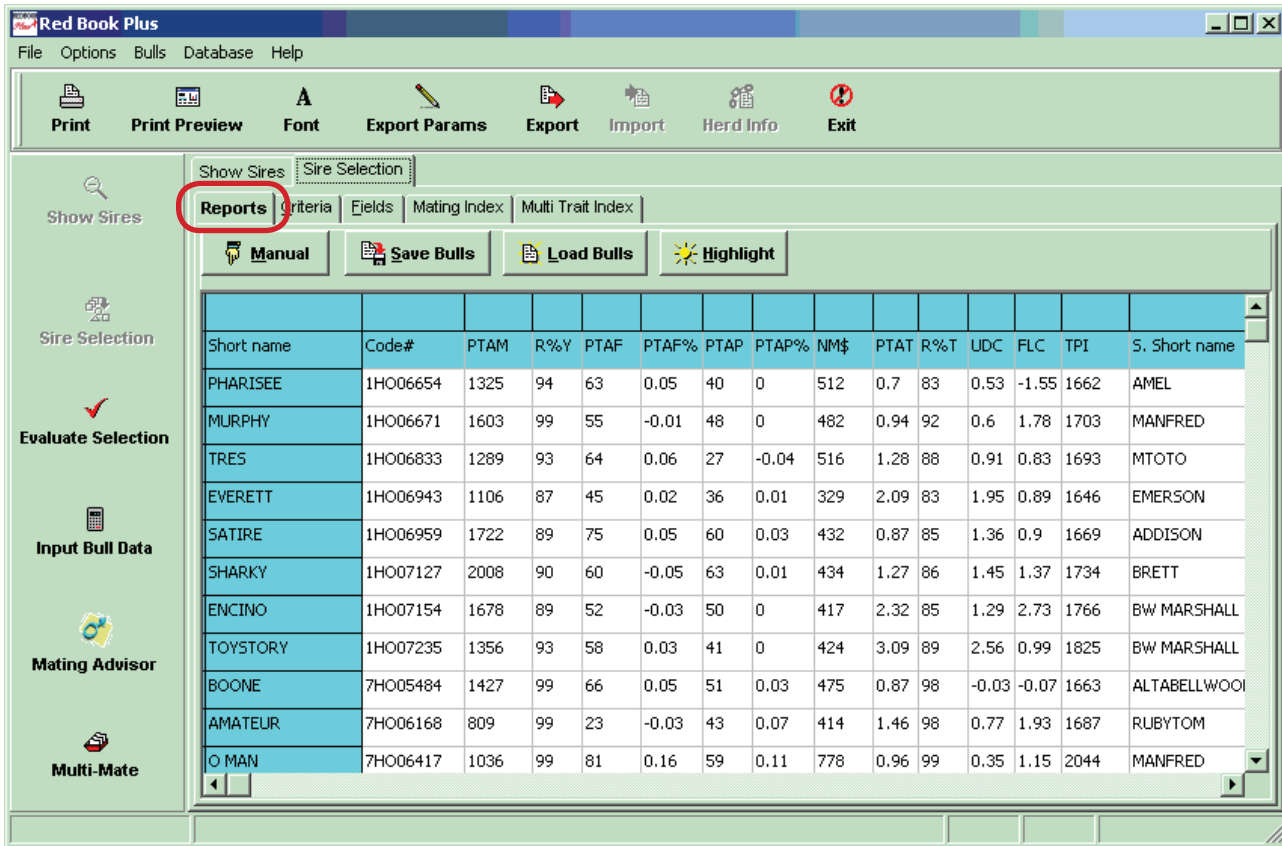
Then, set limits on the criteria by double-clicking on the Operator and the Value and entering your desired values. To remove a trait from Selected Items, double-click on it. To move the traits around in the list, highlight one by clicking on it and hit UP or DN. Insert Group to make another criteria set to select for bulls that meet one set of criteria or another.

Click Run to find out how many bulls meet your criteria. Click on Save Setup to maintain those criteria for future use. Close the Sire Selection Criteria screen or click back on the main screen.



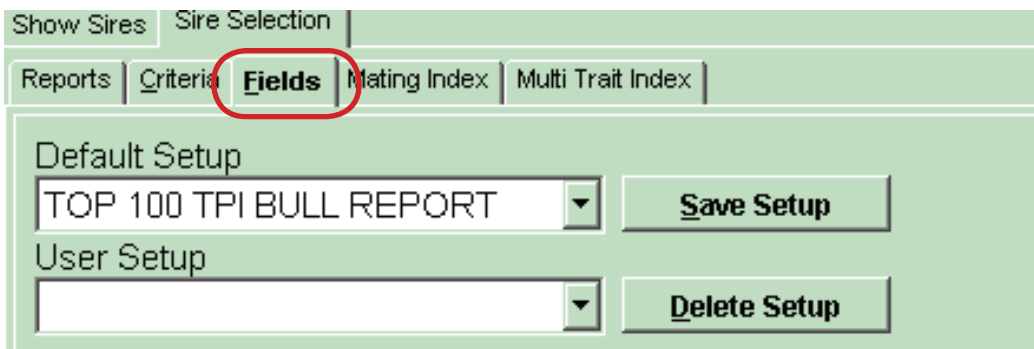
View a Report for Selected Bulls

Hit the **Report tab** to view a report of the list of bulls that meet the defined criteria in the sire selection. By default, pre-defined set of items will appear.



Short name	Code#	PTAM	R%Y	PTAF	PTAF%	PTAP	PTAP%	NM\$	PTAT	R%T	UDC	FLC	TPI	S. Short name
PHARISEE	1HO06654	1325	94	63	0.05	40	0	512	0.7	83	0.53	-1.55	1662	AMEL
MURPHY	1HO06671	1603	99	55	-0.01	48	0	482	0.94	92	0.6	1.78	1703	MANFRED
TRES	1HO06833	1289	93	64	0.06	27	-0.04	516	1.28	88	0.91	0.83	1693	MTOTO
EVERETT	1HO06943	1106	87	45	0.02	36	0.01	329	2.09	83	1.95	0.89	1646	EMERSON
SATIRE	1HO06959	1722	89	75	0.05	60	0.03	432	0.87	85	1.36	0.9	1669	ADDISON
SHARKY	1HO07127	2008	90	60	-0.05	63	0.01	434	1.27	86	1.45	1.37	1734	BRETT
ENCINO	1HO07154	1678	89	52	-0.03	50	0	417	2.32	85	1.29	2.73	1766	BW MARSHALL
TOYSTORY	1HO07235	1356	93	58	0.03	41	0	424	3.09	89	2.56	0.99	1825	BW MARSHALL
BOONE	7HO05484	1427	99	66	0.05	51	0.03	475	0.87	98	-0.03	-0.07	1663	ALTABELLWOOD
AMATEUR	7HO06168	809	99	23	-0.03	43	0.07	414	1.46	98	0.77	1.93	1687	RUBYTOM
O MAN	7HO06417	1036	99	81	0.16	59	0.11	778	0.96	99	0.35	1.15	2044	MANFRED

Click on the **Fields tab** and the Sire Report Selection screen appears. Select how the sire proof information is listed with a default set-up or a customized list of data.



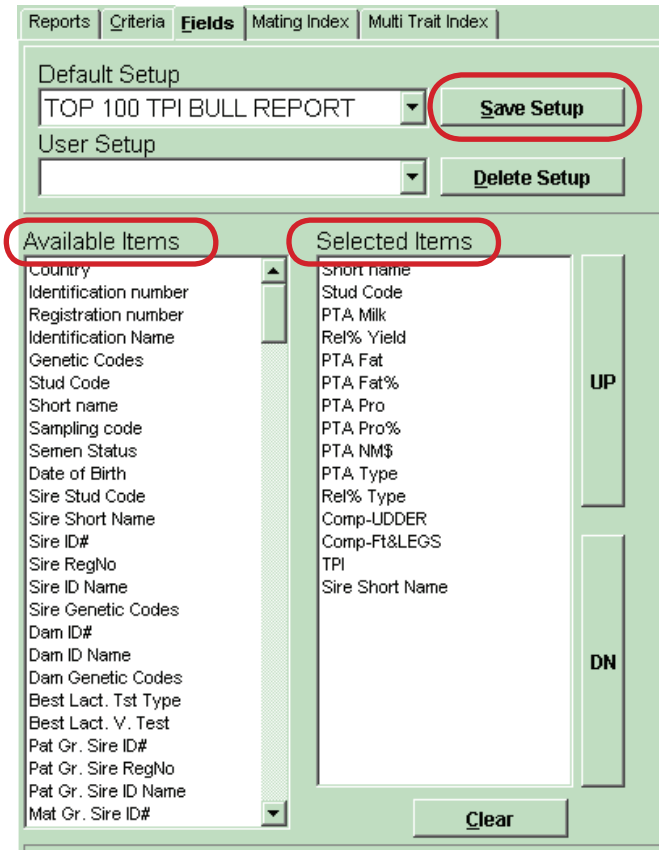
Default Setup
TOP 100 TPI BULL REPORT [v] Save Setup

User Setup
[] Delete Setup

The Sire Report Selection screen will appear with a drop-down list with **Default Setup choices**, or the user can create a customized User Setup and save it for future use.

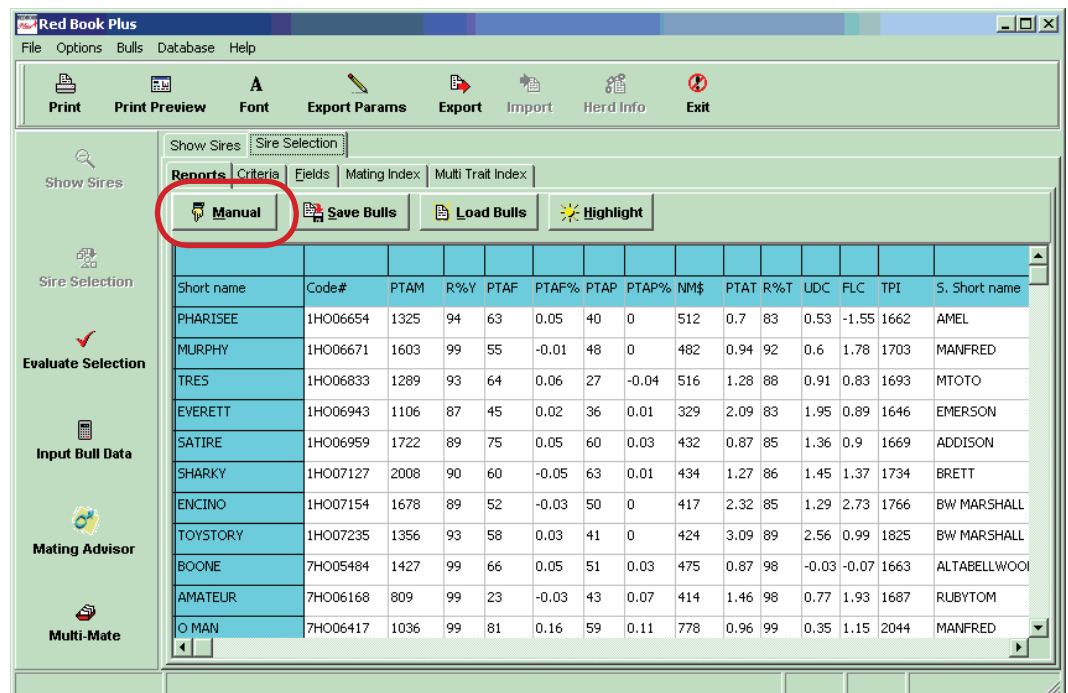
Choose items from the **Available Items** by double-clicking on them to move them into the Selected Items list. Use UP and DN to move the items up or down in the list.

Clear will delete all items in the **Selected Items** list. Save Setup to save the report setup for use again or Delete Setup to remove a setup option.

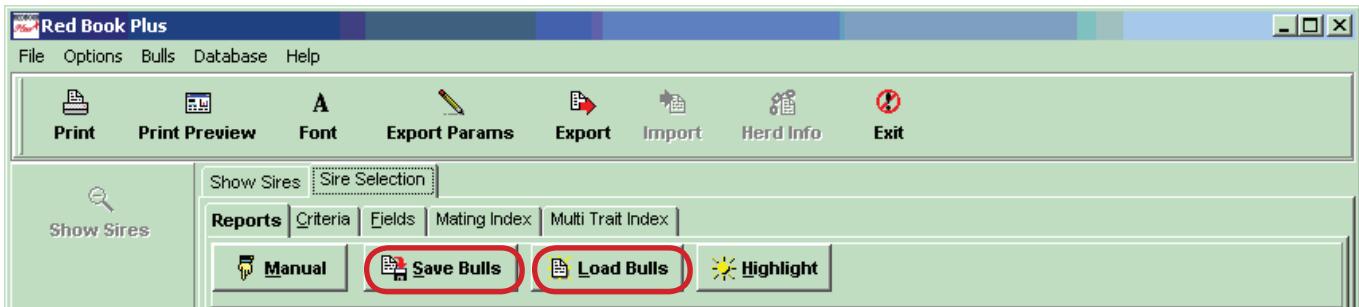
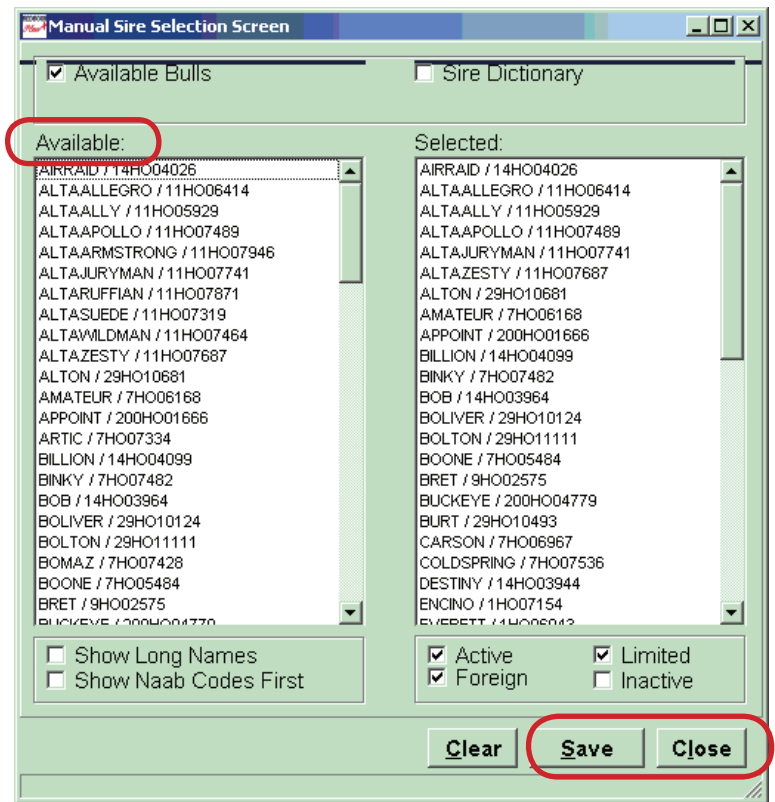


Click the **Reports tab** to view the report for the selected bulls. This list of bulls can be sorted by clicking on the heading of any column. This list can be used as a sire list for Mating Advisor, Mating Index, and MultiMate. This list can also be printed using Print Preview and Print functions and exported to other programs using Export Params and Export functions.

To hand-select bulls to add or subtract to the list of bulls you previously selected, click on the **Manual button**. The Manual Sire Selection Screen will appear.



In the **Manual Sire Selection screen**, choose from either Available Bulls or Sire Dictionary by checking the appropriate box. Then, select bulls from the Available list and double-click on the sire to move it to the Selected list. To remove a bull, double-click on the sire in the selected list. Once the bulls are added to the Selected list, click on Save and then, Close.

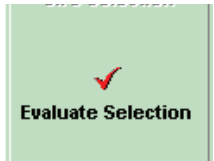


Save Bulls is to maintain that list of specific bulls for further use. Hit the Save Bulls button, click on Yes to save the list for later use, type a name for the list, and click OK to save the list of bulls for reference another time. In order to use the economic analysis function in the program, you must save the groups of bulls you wish to compare.

Click on the **Load Bulls** button to bring a saved list of bulls back into the program. A screen appears asking which sire list to open.

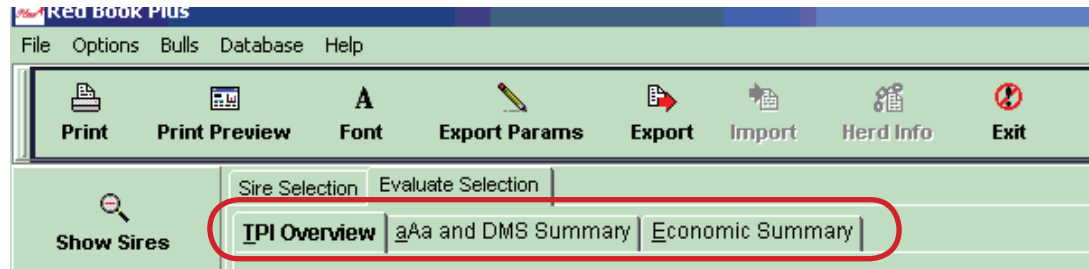
Evaluate Performance for Selected Bulls

Click on the Evaluate button on the main menu to evaluate the group of bulls you last selected.

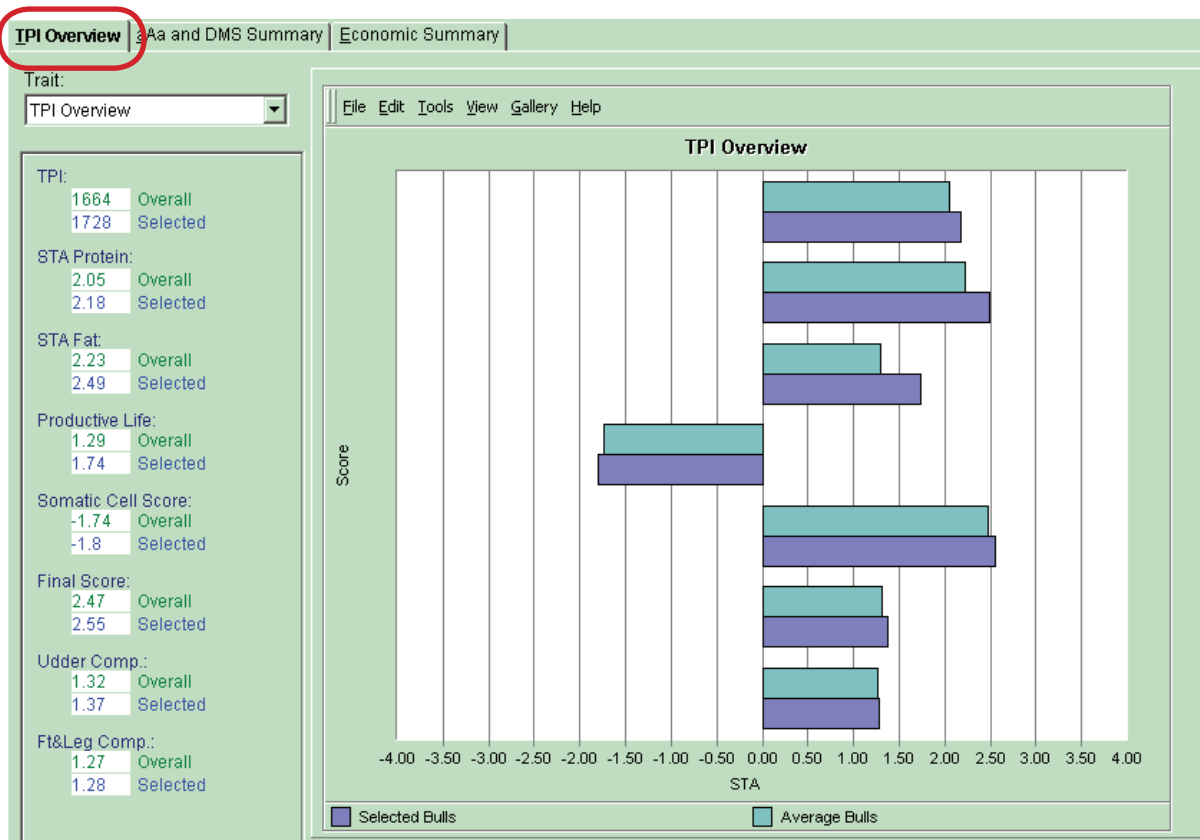


Click on the **Evaluate tabs** to view the:

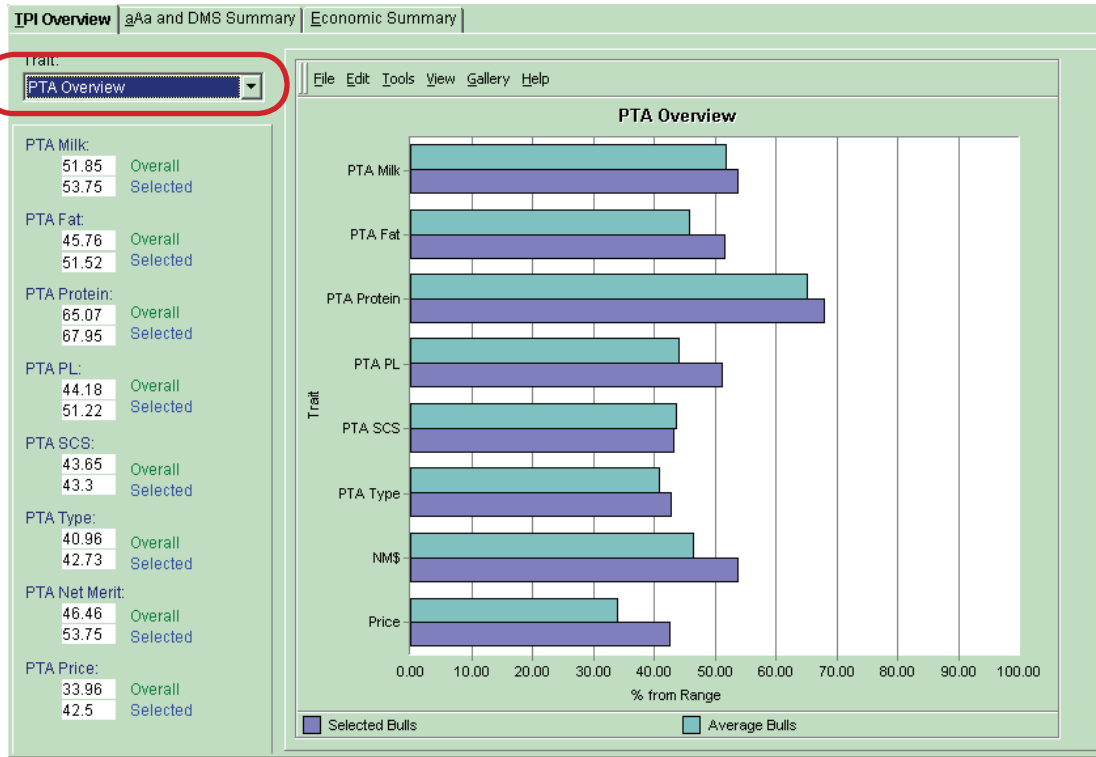
- TPI Overview
- PTA Overview
- User Selected Trait
- Scatter Graph
- aAa and DMS Summary
- Economic Summary



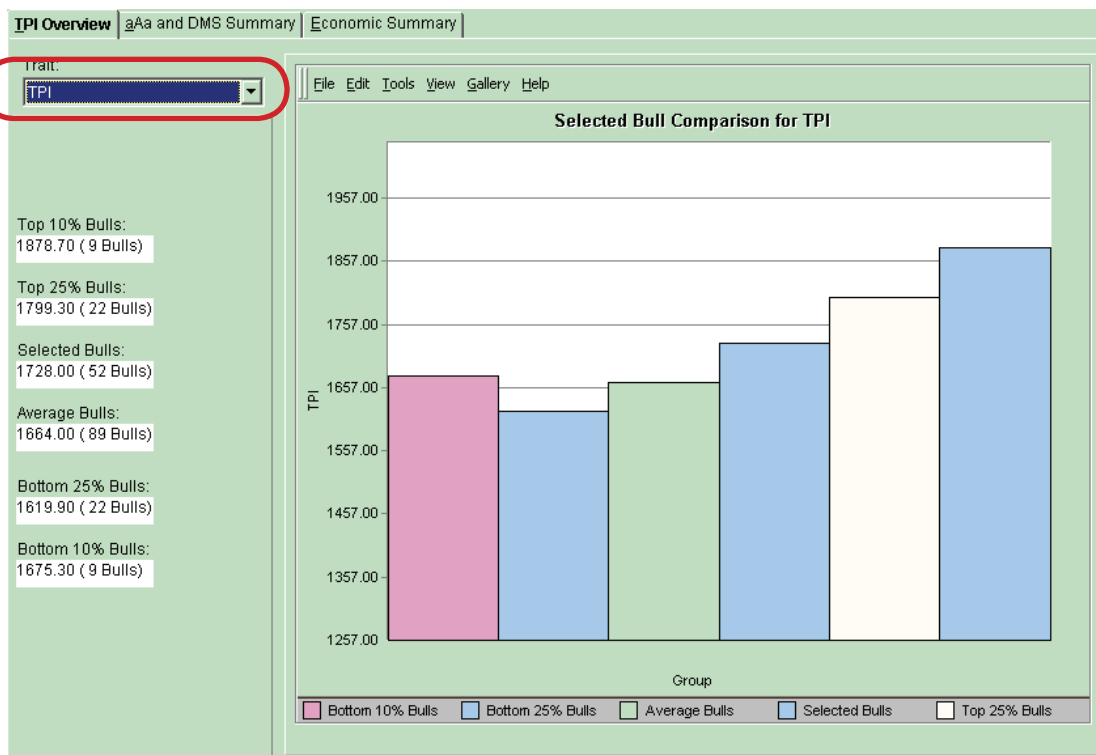
TPI Overview compares the group of bulls you selected to the average Active sires for TPI, STA Protein, STA Fat, Productive Life, Somatic Cell Score, Final Score, Udder Composite and Feet and Legs Composite.



PTA Overview compares the group of bulls you selected to average Active sires in PTA Milk, PTA Fat, PTA Protein, PTA Productive Life, PTA Somatic Cell Score, PTA Type, Net Merit and Price of the semen.



If you wish to evaluate a group of bulls on a trait not listed on the TPI and PTA Overview, then click on the **User Selected Traits** tab. In the User Selected Traits screen, select a trait from the drop-down menu to compare the selected bulls to Bottom 10%, Bottom 25%, Average, Top 25% and Top 10% Active bulls.



To view the aAa and DMS Summary, click on the **aAa or DMS button**.

Select a secondary trait to be listed next to the values by choosing an Additional trait to view from the drop-down list.

aAa and DMS Summary | Economic Summary

aAa Bull Grouping Card

1.2.3	1.2.6	2.3.4	1.3.5
1HO06959 /SATIRE /1669 /231 1HO07235 /TOYSTORY /1825 /132 7HO06168 /AMATEUR /1687 /31254 7HO06782 /ZENITH /1688 /231456 7HO06838 /MATCHES /1666 /31254 7HO06967 /CARSON /1680 /132468 7HO07313 /NATHAN /1660 /231456 7HO07359 /LOU /1675 /132465 7HO07602 /MAVEN /1729 /321456 14HO03831 /MARION /1660 /31246 29HO10681 /ALTON /1732 /213 200HO01666 /APPOINT /1733 /312 200HO04779 /BUCKEYE /1844 /12	1HO07127 /SHARKY /1734 /216	1HO06654 /PHARISEE /1662 /34 1HO06671 /MURPHY /1703 /342 1HO06833 /TRES /1693 /234 1HO07154 /ENCINO /1766 /342 7HO05484 /BOONE /1663 /3241 7HO06695 /LC /1658 /324156 7HO07463 /PONTIAC /1649 /234 9HO02575 /BRET /1772 /43251E 11HO06414 /ALTAALLEGRO /16 11HO07741 /ALTAJURYMAN /17 14HO03944 /DESTINY /1653 /34 14HO04099 /BILLION /1864 /243 14HO04110 /SCOOP /1719 /243 29HO10124 /ROLIVER /1917 /32	7HO07452 /FRITZ /1708 /315246 7HO07536 /COLDSRING /1649 11HO07687 /ALTAZESTY /1710 /1 11HO07823 /OLIVER /1703 /1352 14HO03597 /POTTER /1675 /315 14HO03896 /SANSKRIT /1667 /3 14HO03964 /BOB /1725 /531462 14HO04026 /AIRRAID /1795 /531 29HO10644 /GARRISON /1672 /3 180HO09612 /JOCKO BESNE /16
4.5.6	3.4.5	2.4.6	5.6.1
	7HO06417 /O MAN /2044 /435216 7HO07482 /BINKY /1746 /534162 29HO10493 /BURT /1646 /435	1HO06943 /EVERETT /1646 /246	11HO05929 /ALTAALLY /1720 /15 11HO07489 /ALTAAPOLLO /1699

Additional trait to view: **TPI** **aAa** **DMS**

Economic Summary performs an economic comparison of up to three groups of bulls you have previously selected and saved. Use the drop-down menu to choose a saved list of bulls for the first, second, and third choice if desired.

Enter the herd size, and **click on Allocate Semen** so the program can calculate the units of semen needed to service the herd size. Then, enter the milk price and average milk/day in the fields. You can manually adjust the units of semen allocated to a bull by clicking on the number of units in the list next to the bull's name/NAAB code, and entering a new value.

Hit the **Calculate button** to find the weighted averages for 12 of the key traits and expected profits for the respective sire lists.

IPI Overview | aAa and DMS Summary | **Economic Summary**

File: First Choice: topbulls.lst Second Choice: secondselection.lst Third Choice:

PHARISEE / 1H006654	1	PHARISEE / 1H006654	1	
MURPHY / 1H006671	1	MURPHY / 1H006671	1	
TRES / 1H006833	1	TRES / 1H006833	1	
EVERETT / 1H006943	1	EVERETT / 1H006943	1	
SATIRE / 1H006959	1	SATIRE / 1H006959	1	
SHARKY / 1H007127	1	SHARKY / 1H007127	1	
ENCINO / 1H007154	1	BOONE / 7H005484	1	
TOYSTORY / 1H007235	1	AMATEUR / 7H006168	1	
BOONE / 7H005484	1	LC / 7H006695	1	
AMATEUR / 7H006168	1	ZENITH / 7H006782	1	

Herd Size: 11 **Allocate Semen** Milk Price: 12.88 Average Milk / day: 60 **Calculate**

TPI:	1728.23	1688.62		
NM\$:	433.02	415.05		
Semen \$:	32.88	29.21		
Milk:	1338.83	1317.92	13.18	13.39
Fat:	57.38	58.49	67.26	65.99
Protein:	42.19	42.05	107.23	107.59
Productive Life:	2.19	1.82	420.26	504.49
SC Score:	2.87	2.88		
Type:	1.86	1.65		
Udder Comp.:	1.37	1.16	160.27	189.01
Ft&Leg Comp.:	1.28	1.16	79.92	88.81
% Inbred Coeff:	5.50	5.50	-126.50	-126.46
Average\$:	338.34	301.36		

Input Data

Click on **Input Data button** to update a bull's semen price, aAa, DMS or add user-defined values. First, find the bull by typing his name or code in the Search bull from field and hit Enter key. Then, double-click on the desired bull in the list and the bull's default values for price, aAa and DMS will appear. If desired, change the values and click on Save to update that bull's data.



There are also additional tools for adding bull data under the Bulls drop down list at the top of the page. The Add Bulls tool is form for entering bulls that are not in the database. Click on add bulls enter the password of 'Cows" and the Add Bulls form will open and the user can enter data for a single bull and click save to add the bull to the database. The Delete Bull function can be used to delete a previously added user added bull.

The Add Bulls Flexible allows the user to import multiple user added bulls using a file derived from a different source. Click on Add Bulls Flexible and a screen will appear that can be used to set up the format of the file to import. After the setup is complete the Preview button will show what will be imported and the Import button imports the bulls from the file into the database.

The Manage Young Bulls tool will bring up a screen similar to the Show Sires tab. The user can search for Young Sires that are contained in the included Young Sire file. The user can select these young sires and add them to the Database. Young bulls previously added to the database can be deleted using this form as well.

Export and Import User Added Bulls can be used to keep added bulls in the database when the program is updated.

A screenshot of the "Input Bull Data" form. The form has a green header with tabs: "Show Sires", "Sire Selection", "Evaluate Selection", and "Input Bull Data". Below the tabs, there is a checkbox for "Available Bulls Only" which is checked. A search field labeled "Search bull from:" is highlighted with a red circle. Below the search field is a list of bulls with their IDs and names, such as "11HO05928 / CARTERS-CORNER ALLEY-ET". At the bottom of the list, there is a checkbox for "Select Multiple Rows" which is checked. To the right of the list, there are input fields for "Price:", "aAa:", and "DMS:", each with a "Reset" button. Below these are sections for "Alpha Numeric User Defined Fields:" and "Numerical UserDefined Fields:", each with three input fields and a "Reset Values" button. At the bottom right, there are "Clear" and "Save" buttons, with the "Save" button highlighted by a red circle. At the bottom left, there are checkboxes for "Show Long Names" and "Show NAAB Codes First", both of which are checked.

Define Index

If you wish to create your own Multi-Trait Index such as TPI, click on Define Index button and the Multi Trait Index and Mating Index screen will appear.

Multi Trait Index

Select from the list of **Available Traits** by double-clicking on one to include it in your index. Then assign a weight to the trait by double-clicking on the value and entering your desired weight. You can calculate and store up to four Multi-Trait Indexes. Hit Calculate to calculate your index and Save Setup if you wish to use these parameters at a future date.

To view the values you just calculated, click back on the Sire Selection menu option and add the Multi-Trait field you just calculated to your report.

Multi Trait Index

Available Traits: PTA Milk, PTA Fat, PTA Fat%, PTA Pro, PTA Pro%, PTA SCS, PTA PL, PTA Type, Stature, Strength, Body Depth, Dairy Form, Rump Angle, Rump Width, R. Legs-Side V, R. Legs-Rear V, Foot Angle

Selected Traits: PTA Milk (4.1), PTA Fat (3.5), PTA Fat% (2.0), PTA Pro (1.0)

Weight: 4.1, 3.5, 2.0, 1.0

Constant: 10.0

Buttons: Save Setup, Delete Setup, Calculate, Clear

Mating Index

Select Trait and respective Trait Qualifier for four prioritized traits. Hit the Calculate button, then Save Setup to use that index again.

Mating Index

Stature: Shorter, **Short**, Even, Tall, Taller, Weight: 1

Strength: Frailer, Frail, Even, Strong, Stronger, Weight:

Body Depth: Shallower, Shallow, Even, **Deep**, Deeper, Weight: 2

Dairy Form: Tighter, Tight Rib, Even, Open Rib, More Open, Weight:

Rump Angle: Higher, High Pins, Even, Sloped, More, Weight:

Thurl Width: Narrower, Narrow, Even, **Wide**, Wider, Weight: 3

R. Legs SV: Less, Posty, Even, **Sickle**, More, Weight: 4

R. Legs RV: More, Hock-in, Even, Straight, Straighter, Weight:

Foot Angle: Lower, Low, Even, Steep, Steeper, Weight:

FL Score: Lower, Low, Even, High, Higher, Weight:

Fore U Att: Looser, Loose, Even, Strong, Stronger, Weight:

RU Height: Lower, Low, Even, High, Higher, Weight:

RU Width: Narrower, Narrow, Even, Wide, Wider, Weight:

Udder Cleft: Weaker, Weak, Even, Strong, Stronger, Weight:

Udder Depth: Deeper, Deep, Even, Shallow, Shallower, Weight:

Teat Place: Wider, Wide, Even, Close, Closer, Weight:

R Teat Plac: Wider, Wide, Even, Close, Closer, Weight:

Teat Length: Shorter, Short, Even, Long, Longer, Weight:

Buttons: Save Setup, Delete Setup, Calculate, Clear

Summary: 1 Stature: Short, 2 Body Depth: Deep, 3 Thurl Width: Wide, 4 R. Legs SV: Sickle

Mating Advisor

To use the **Mating Advisor**, first select your group of bulls in Sire Selection (see “Selecting a Group of Bulls”) to be used as your mating choices. Then click on Mating Advisor to mate an individual animal based on her pedigree.


Input Bull Data

In the Search daughter from: field, search for the sire of the animal you are mating by entering the sire’s name, NAAB code or registration number and hit Enter. Highlight the chosen sire by clicking on his name. Only the sire is needed to perform a mating, but the more you can enter in the animal’s pedigree, the better.

If you know the rest of the animal’s pedigree, in the Search grand daughter from: field, search for the Maternal Grandsire of the animal you are mating. And, finally, do the same for the Maternal Great Grandsire in the Search great grand daughter from: field.

Once the pedigree information is entered, you must enter your ideals for mating the animal in the Mating Setup section.

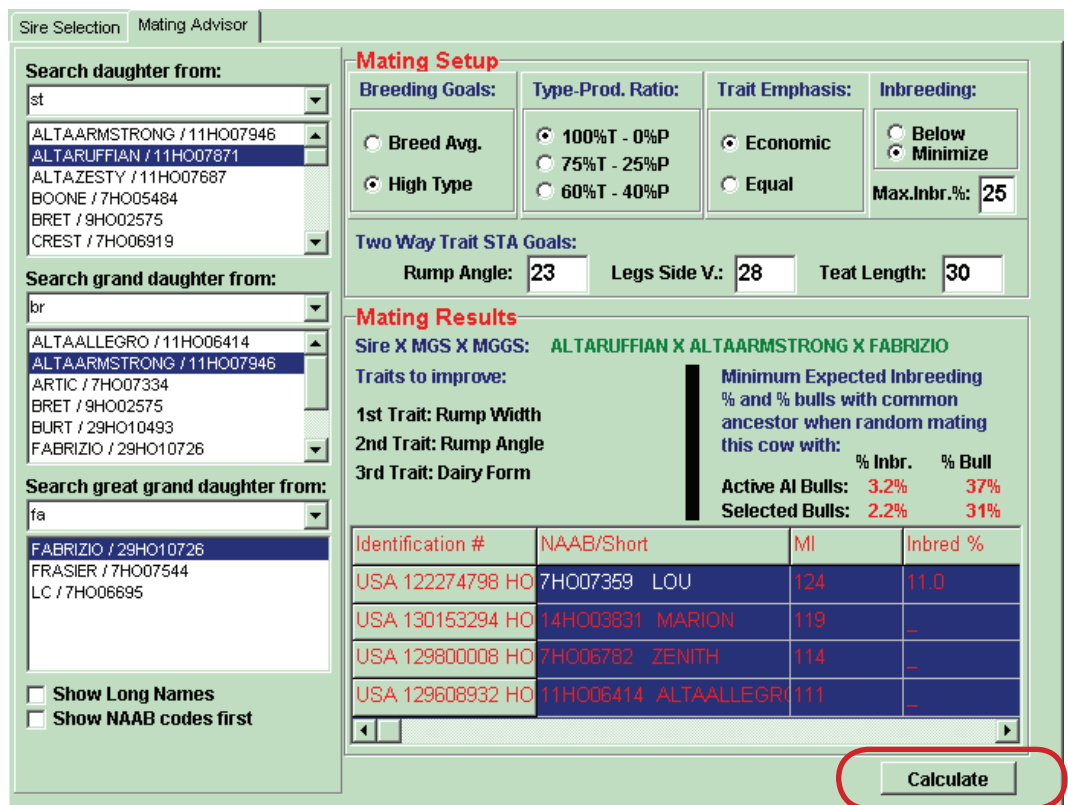
Breeding Goals: Choose breed average or high type

Type-Production Ratio: Choose the desired percentage weights for type and production

Trait Emphasis: Choose an economic trait emphasis or equal for a standard mating

Inbreeding: Choose a percent to keep inbreeding below or simply choose to minimize

Two Way Trait STA Goals: Enter desired linear trait values for the two-way traits.



The screenshot shows the Mating Advisor interface with the following sections:

- Sire Selection / Mating Advisor:** Search daughter from: st; Search grand daughter from: br; Search great grand daughter from: fa.
- Mating Setup:**
 - Breeding Goals:** Breed Avg., High Type
 - Type-Prod. Ratio:** 100%T - 0%P, 75%T - 25%P, 60%T - 40%P
 - Trait Emphasis:** Economic, Equal
 - Inbreeding:** Below, Minimize; Max.Inbr.%: 25
 - Two Way Trait STA Goals:** Rump Angle: 23, Legs Side V.: 28, Teat Length: 30
- Mating Results:**
 - Sire X MGS X MGS: ALTAARUFFIAN X ALTAARMSTRONG X FABRIZIO
 - Traits to improve: 1st Trait: Rump Width, 2nd Trait: Rump Angle, 3rd Trait: Dairy Form
 - Minimum Expected Inbreeding % and % bulls with common ancestor when random mating this cow with:
 - Active AI Bulls: 3.2% Inbr., 37% Bull; Selected Bulls: 2.2% Inbr., 31% Bull
 - Table of results:

Identification #	NAAB/Short	MI	Inbred %
USA 122274798 HO	7HO07369 LOU	124	11.0
USA 130153294 HO	14HO03831 MARION	119	-
USA 129800008 HO	7HO06782 ZENITH	114	-
USA 129608932 HO	11HO06414 ALTAALLEGRO	111	-

Buttons: Show Long Names, Show NAAB codes first, **Calculate**

For Mating Results, hit **Calculate**. The Mating Index (MI) is an internal calculation where a higher number reflects a better match. The number itself is not of significance, but the ranking and difference reflects the closeness of the desired match. The expected inbreeding percent is also shown for each possible mating sire.

Also in the Mating Results, Traits to Improve lists the top three traits that need the most improvement according to the animal’s pedigree.

Examples

EXAMPLE #1

How do I look up an old bull like Blackstar?

1. Click on Look up Bulls
2. Check Sire Dictionary
3. Enter sire name, NAAB code or registration #
4. Click on Run
5. Choose the sire in the Bulls Found list
6. Click on Show

EXAMPLE #2

How do I find a group of bulls that improve udders and feet and legs while maintaining production values?

1. Click on Sire Selection
2. Click on Criteria
3. In the Available Items list, double-click on:
 - a. Comp – UDDER
 - b. Comp – FT&LEGS
 - c. PTA Milk
 - d. PTA Pro
4. Double-click on the listed Value for each and enter the desired number
 - a. Comp – UDDER ≥ 1.5
 - b. Comp – FT&LEGS ≥ 1.5
 - c. PTA Milk ≥ 1000
 - d. PTA Pro ≥ 40
5. Click on Run
6. Click on Run Report back on the main screen
7. If desired, click on the Fields button to adjust what is listed on the report

EXAMPLE #3

How do I find the best 10 bulls that will improve protein, udders, feet and legs and add strength? Place equal emphasis on the three type traits, but 3 times more on protein (i.e. protein 3, all others 1).

1. Click on Define Index to develop a Multi-Trait Index
2. Double-click on the desired Available Traits to move them into the Selected Traits list
 - a. PTA Pro
 - b. Strength
 - c. Comp – UDDER
 - d. Comp – FT & LEGS
3. Double-click on the Weight values to enter your desired value
 - a. PTA Pro – Weight: 3
 - b. Strength – Weight: 1
 - c. Comp – UDDER – Weight: 1
 - d. Comp – FT & LEGS – Weight: 1
4. Click on the Calculate button
5. Click on Save Setup button
6. Enter a name to save the Multi-Trait Index and click OK
7. Click on Sire Selection
8. Click on Criteria
9. In Available Items, double-click on User MT Index 1
10. Double-click on the operator and enter TOP, click OK
11. Enter a percent to and click on Run
12. Click back on Run Report on main screen
13. If desired, click on the Fields button to adjust what is listed on the report

EXAMPLE #4

How do I compare 2 groups of bulls based on production and type where Group 1 bulls are more than \$20 and Group 2 bulls are less than \$20?

1. Click on Sire Selection
2. Click on Criteria
3. Choose Top 100 TPI sires from Default Criteria list
4. Double-click on Price in the Available Items list to add it to the Selected Items list
5. Double-click on the price value and change it to \$20 and click OK
6. Save Setup as "Top 100 TPI less than \$20" and click OK
7. Double-click on the operator to change it to \geq and click OK
8. Save Setup as "Top 100 TPI more than \$20" and click OK
9. In the User Criteria menu, choose the less than \$20 criteria, click Run and click Run Report back on the main screen
10. Click on Save Bulls. Click OK to save the list for later use. Name the sire list "Top 100 TPI less than \$20 and click OK
11. In the User Criteria menu, choose the more than \$20 criteria, click Run and click Run Report back on the main screen
12. Click on Save Bulls. Click OK to save the list for later use. Name the sire list "Top 100 TPI more than \$20 and click OK
13. Click on Evaluate
14. Click on the Economic Summary tab
15. For the first choice, choose the less than \$20 sire list
16. For the second choice, choose the more than \$20 sire list
17. Enter the herd size, milk price, and average milk/day
18. Click on Allocate Semen
19. Click on Calculate
20. By Average \$, the dollars associated with the genetic improvement from that group is shown (Milk, fat, protein, feet & legs, plus udder minus inbreeding effects)

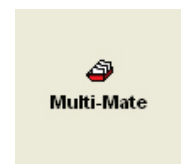
EXAMPLE #5

How do I find a group of bulls to mate my favorite heifer and limit inbreeding?

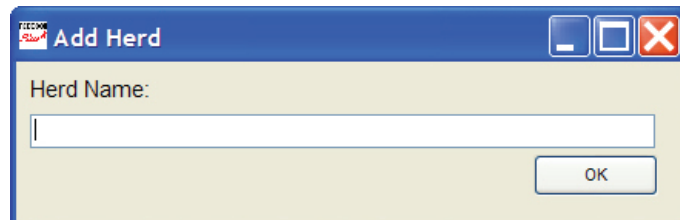
See "Mating Advisor". Follow those steps, but under Inbreeding in the Mating Setup, choose to minimize and set a maximum for inbreeding at 0.

MultiMate

Click on the MultiMate icon to open the MultiMate portion of the program.

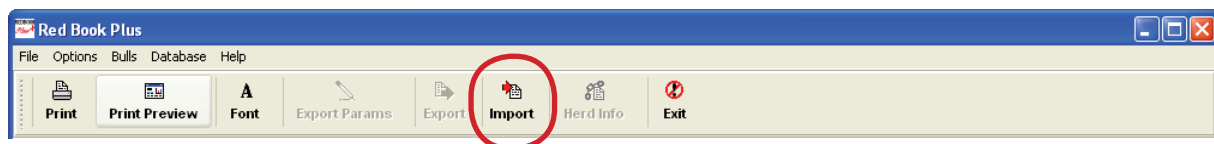


The first time the MultiMate is opened it will ask for a Herd Name to be entered. In subsequent uses of the program the last herd viewed will be automatically loaded.



There is a series of tabs for setting up the herd for mating and viewing results.

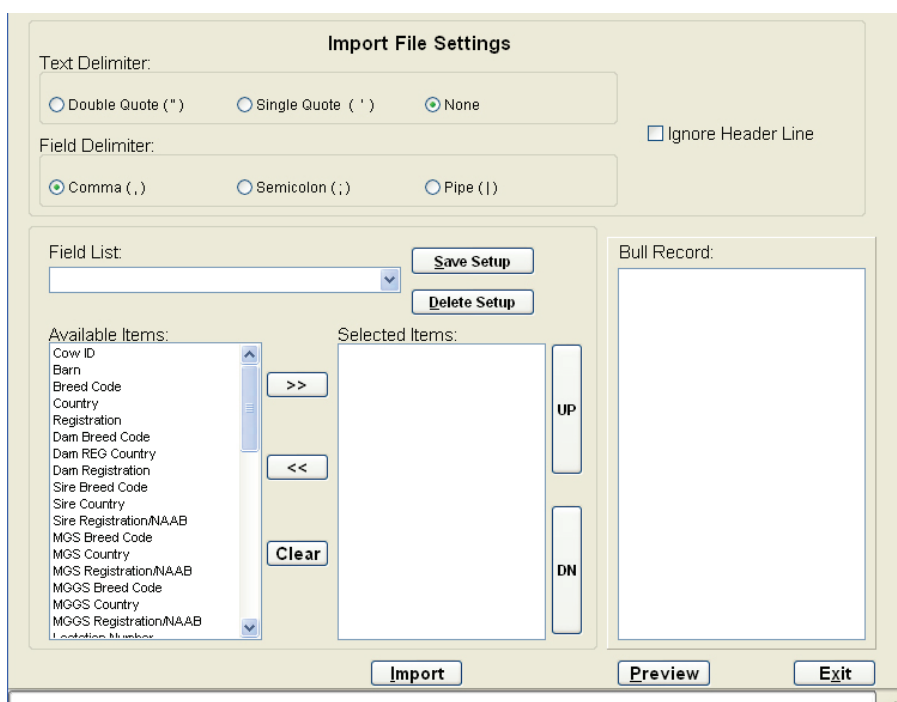
The Cow Data tab can be used to import or view herd data. To import herd data use the **Import button** at the top of the page.



After clicking on the Import icon a dialogue box will open asking "Do you want a Flexible Import for cow data?" Select yes if you want to import information from a herd management software or any source other than a mating file from Holstein Association USA.

If you answer yes a box will appear that will allow you to set up a flexible import. Choose the traits that you wish to import from your file and the format of your file.

The Preview button will allow to see what fields will be imported and the Import button will import the data into the Cow data tab in MultiMate.



If you answer no you will be able to import a file from the Holstein Association. You will be asked if you want to overwrite the herd data. Yes will cause the information in the file to replace all herd information and an answer of no will cause the data to be added as additional information for the herd. Locate the file and double click on the file name to open it.

You now have cow information under the **Cow Data tab** that can be edited as needed. You can add or change data by entering information in that field and hitting the save button. In addition you can add cows manually using the add cow button, delete a cow using the Delete cow button, or delete all cows using the Delete Cow button. The do not mate check box can be used to keep a cow in the database, but not to include it in the current mating.

Cow Record | Herd Data | Cow ID: 5 | Barn: ABBA

Buttons: Add Cow, Save, Delete Cow, Delete All

CowID	Barn
1	LAVENDR
5	ABBA
6	ASHLEY
8	MANESSA
9	POPTART
10	ALLISON
12	MANDY
34	34
36	36
44	44
46	46
49	49
55	BEYONCE
69	69
75	LUCINDA
98	98
256	9839
268	268
282	282

Physical Traits: Stature: 43, Strength: 35, Body Depth: 38, Dairy Form: 30, Rump Angle: 18, Rump Width: 42, Rear Legs Side V.: 30, Rear Legs Rear V.: 25, Foot Angle: 20, Fore Udder Att.: 37, Rear Udder Height: 35, Rear Udder Width: 32, Udder Cleft: 34, Udder Depth: 35, Front Teat Plac.: 30, Rear Teat Plac.: 30, Teat Length: 28, Calving Ease: 8, Do not mate:

Production Traits: Lactation: 2, Stage of Lact: 4, Age: 50, Reg #: USA 131779488 HO, Dam ID: USA 127106135 HO, Sire: USA 2234121 HO, MGS: CAN 5457798 HO, MGS: CAN 391681 HO, PTA Milk: -480, PTA Fat: 30, Fat %: 0.19, PTA Protein: -8, Protein %: 0.03, PTA PL: 1.2, PTA SCS: 3.04, aAa: , DMS:

Classification Scale: 1-10 Scale, 1-50 Scale

The **Mating Goals tab** allows you to setup the trait goals and weights and type and production weights.

Classification Goals

Linear Goals Defaults: HIGH TYPE Save

Trait	Goal	Weight
Stature:	42	3
Strength:	35	3
Body Depth:	38	3
Dairy Form:	41	4
Rump Angle:	23	4
Rump Width:	36	3
R Legs-Side View:	28	3
R Legs-Rear View:	25	3
Foot Angle:	27	4
Fore Attachment:	33	5
Rear Udder Height:	37	5
Rear Udder Width:	37	5
Udder Cleft:	30	5
Udder Depth:	25	5
F Teat Placement:	29	5
R Teat Placement:	32	5
Teat Length:	30	4

Max # Type Traits: 3 Show one two way traits

Production Goals Defaults: Save

Trait	Goal	Weight
Milk:	1500	1
Fat:	50	1
Fat %:	0.25	1
Protein:	50	1
Protein %:	0.15	1
Productive Life:	3	1
SCS:	3	1

Max # Production Traits: 3

Other

Production weight factor: 20
 Type weight factor: 30
 Min aAa/DMS Matchup %: 100

The **Mating Setup** tabs will allow you choose the mating type.

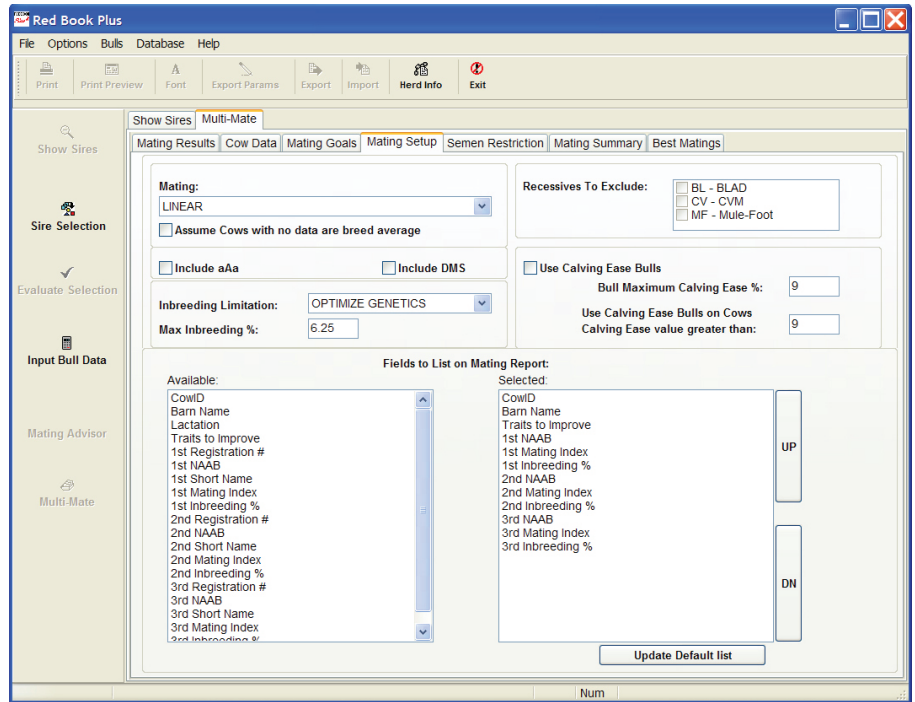
Mating types are:

Linear - using linear scores for mating purposes

Genetic - using Standard Transmitting Ability information to include all aspects of the pedigree.

Pedigree - To disregard linear data and mate on the basis of pedigree information.

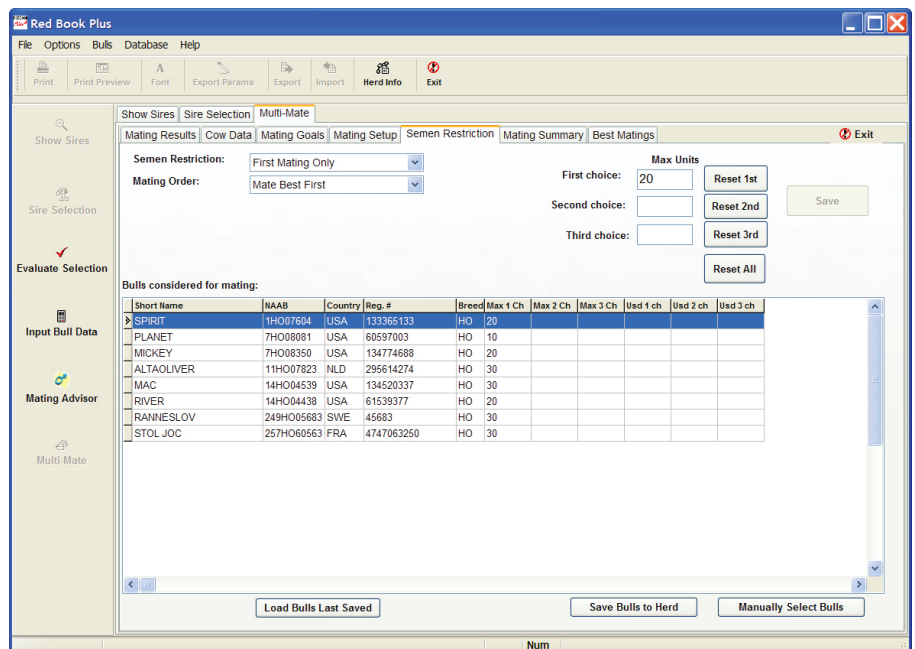
You can check to include aAa information, exclude genetic recessives, use calving ease, and set inbreeding parameters.



Optimize genetics will include inbreeding based on the percentage that you include, but will factor in the quality of the mating. Maximum Inbreeding % will not allow any matings over the inbreeding percentage that is entered.

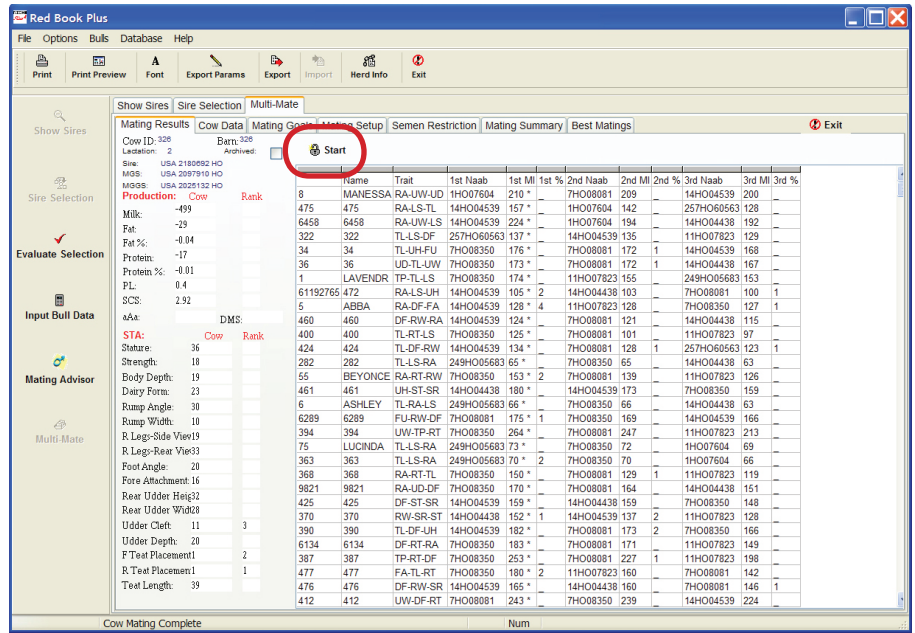
The fields to report section allows the user to decide what fields will be displayed in the mating results. The user can move fields into and out of the selected section from the available section to personalize the mating results section.

The **Semen Restriction** tab can be used to select a semen restriction method of first matings only or all matings and a Mating Order of Random, Best First, or Worst First. The bull list will contain bulls from the last Sire Selection report or Manually Select Bulls button can be used to select different bulls or create a bull list from scratch. Semen Restrictions can be set by highlighting a bull and entering the number of units in the Max Units column at the top and clicking the save button. If the user wants to set the same number of units for multiple bulls then the Control key can be used to highlight multiple bulls simultaneously.

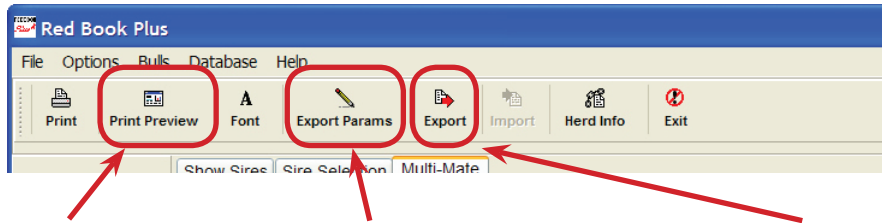


Once the user has set all of the mating preferences, the **Mating Results** tab is used to mate the cows in the herd.

Click the Start button to begin the mating process. A new series of buttons will appear allow the user to process the matings. The Process button will mate on cow at a time. The Skip button will skip the cow currently displayed on the screen. The Process All button will mate the entire herd. The Stop button stops the Process All command. The Find Cow button will find an individual cow for mating that cow at any time the user chooses.



Once the mating is completed,

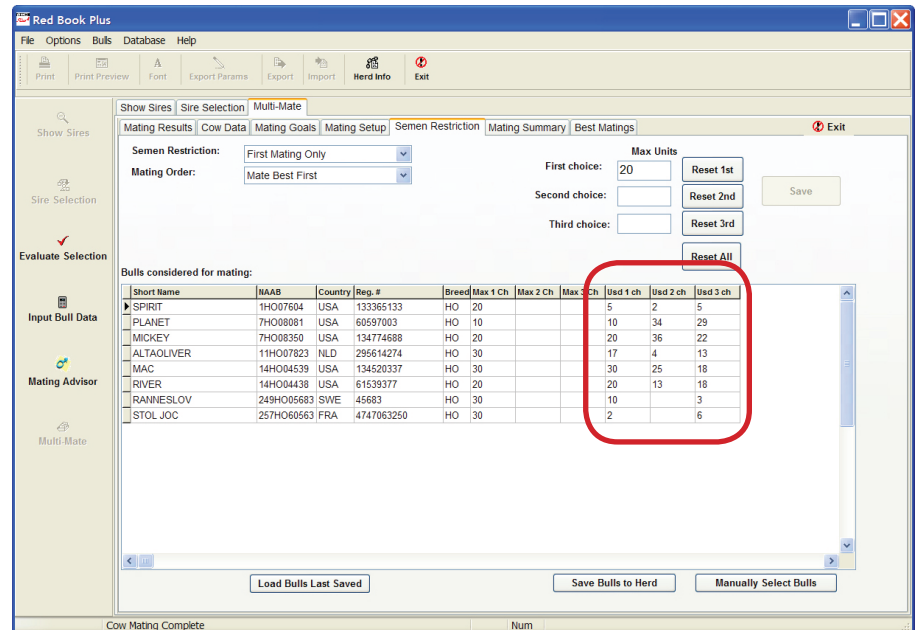


The **Print** and **Print Preview** buttons can be used to print the results.

The **Export Params** button can be used to set a file format for exporting the mating results.

The **Export** button allows the user to save an export file of the mating results to their computer for use in other programs.

After the mating is complete, the **Semen Restriction** tab will show the number of units used per bull.



The **Mating Summary tab** shows a genetic summary of the mating results.

Trait	1st	2nd	3rd
TPI	1755	1877	1835
PTA Milk	2604	2737	2637
PTA Fat	61	65	66
PTA Fat %	-0.12	-0.12	-0.11
PTA Protein	68	71	71
PTA Protein %	-0.04	-0.04	-0.03
PTA Type	2.29	2.57	2.38
PTA PL	-0.7	0.6	0.3
PTA SCS	2.98	2.93	2.96
Udder Comp.	1.67	2.03	1.84
FT&LG Comp.	1.02	0.92	0.88
Dairy Comp.	2.22	2.33	2.14
Body Comp.	2.15	1.98	1.97
NMS	386	478	452
PTA MFPS	0	0	0
Price	31.25	34.23	30.91
TOTAL			
Total Units	114	114	114
Total Price	3562	3902	3524

The **Best Matings tab** allows the user to select an individual bull to be chosen and the cows that are the best matings for that particular bull. The user can select a bull and how many units of semen the herd wants to use of that particular bull and click the Process Matings button and the cows with the best mating index will be listed.

Short Name	NAAB	Country	Reg. #	Breed
ALTAOLIVE	11HO07823	NLD	295614274	HO
MAC	14HO04539	USA	134520337	HO
MICKY	7HO08350	USA	134774688	HO
PLANET	7HO08081	USA	60597003	HO
RANNESLQ	249HO0568	SWE	45683	HO
RIVER	14HO04438	USA	61539377	HO
SPIRIT	1HO07604	USA	133365133	HO
STOL JOC	257HO6056	FRA	4747063250	HO

Name	Cow	Trait	MI	Inbr. %	Lact
448	448	DF-UW-UH	341	_	1
428	428	UW-DF-UH	338	_	1
813	813	UW-UH-TP	328	_	1
767	767	UW-DF-UH	317	_	1
6135	6135	UC-UH-UW	316	_	1
459	459	UW-DF-UH	311	_	1
495	495	UW-RT-UH	304	_	1
431	431	DF-UH-UW	303	_	1
839	839	UH-DF-UW	302	2	1
6520	6520	UW-FU-UH	300	_	1

RED BOOK⁺ MultiMate

For more help contact support at 800.952.5200



Software developed by:

Holstein Association USA, Inc.

1 Holstein Place, PO Box 808
Brattleboro, Vermont 05302-0808

www.holsteinusa.com • 800.952.5200